



Sacred Heart UNIVERSITY

INTERNATIONAL ADMISSIONS

Sacred Heart University
5151 Park Ave | Fairfield, CT 06825
intl@sacredheart.edu

sacredheart.edu/usa

 [@sacredheartuniversity](https://www.facebook.com/sacredheartuniversity)

 [@shuinternational](https://www.instagram.com/shuinternational)

 +1 203-371-7880

WELCOME TO SACRED HEART UNIVERSITY



WHY SHU?



ENDORSEMENTS

- *The Princeton Review*:
 - **Best 387 Colleges & Universities**
 - **Best Business Schools**
- *U.S News & World Report*:
 - **Among the Best National Universities**
 - **Best Undergraduate Business School**
- **#1 Hidden Gem University** in New England by *College Gazette*
- SafeWise: **Among safest college towns**
- **AACSB-International Accredited**, for top 5% undergraduate business programs worldwide



ACADEMICS

- **80+ undergraduate, graduate, doctoral and certificate programs**
- Small classroom setting —
14:1 student-to-faculty ratio
- Average class size: **24**



GLOBAL PRESENCE

- **40 countries** represented
- **2 campuses abroad** (Ireland, Luxembourg)

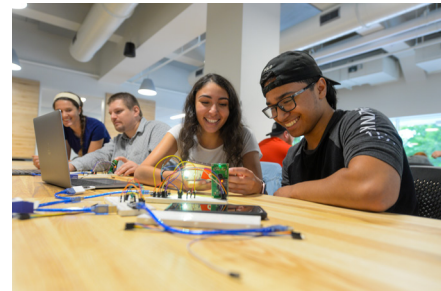


CAMPUS LIFE

- **Campus housing** for undergraduates
- **8 on-campus dining** destinations
- **33 NCAA Division I** teams
- **36 club sports** with **39 club sports teams**
- **100+** clubs and organizations
- **1 golf course**
- **4 Performing Arts Cohorts**
(band & orchestra, choral, dance, theatre arts)



Opened in August 2019, the **Valentine Health & Recreation Center** features a bowling center, a fitness area, an indoor climbing wall, a suspended running track, a golf simulator and a multipurpose sport court.



West Campus was the former General Electric World HQ. This innovation hub now houses the Welch College of Business & Technology and its engineering IDEA Lab, the Farrington College of Education & Human Development and the School of Social Work.



Residence Halls with study rooms, cozy lounge areas, fitness rooms, game rooms, high levels of safety and security and great locations.

UNDERGRADUATE INTERNATIONAL APPLICATION

Requirements

- Apply Here: www.sacredheart.edu/uginternational
- High school transcripts
- SAT/ACT optional
- One personal essay
- Two letters of recommendation: one from your school counselor and one from a teacher
- If native language is not English, submit proof of proficiency
- Early Action II deadline: **Feb. 1**

Scholarships for International Undergraduates

Academic scholarships up to US \$18,000 are available and renewable each year. Merit awards are based on high school grades. No additional form is necessary.

Participation grants of up to US \$4,000 per year are available for performing arts: guard, band and orchestra, dance, theatre, choral.

English Proficiency Tests Accepted (*Minimum Scores*)

- | | |
|-----------------------------|--------------------------------------------------------------------------------|
| • TOEFL 80 | • EIKEN pre-1 |
| • IELTS 6.5 | • GTEC 1200 |
| • Cambridge C1 Advanced 180 | • International School Curriculum in English can be considered for test waiver |
| • EF level C1 | • Duolingo online test 110 |
| • PTE min. 62 | |
| • ELS level 112 | |

College Credit Transfer

For college credit transfer, submit an English translation of your courses taken overseas and submit a course-by-course evaluation by WES or accredited agency listed on www.naces.org/members.html. Advanced Placement, IB Higher Level, French Baccalaureate, German Abitur, Swiss Matura and United Kingdom A Level General Certificate Examinations are also considered for credit transfer.

Tuition & Fees

All tuition and fees are available online visit www.sacredheart.edu/educationcost

UNDERGRADUATE INTERNATIONAL APPLICATION

1

APPLY

Complete the application



2



ACCEPTANCE

Receive Decision Letter

3



ENROLL

You are IN! Now reserve your spot

4



STUDENT VISA

Receive your I-20 and apply for student visa

UNDERGRADUATE PROGRAMS *(Many majors offer an accelerated 4+1 master's degree option)*

Accounting & Information Systems
Art and Design
Biochemistry
Biology
Business Economics
Chemistry
Coastal & Marine Science
Communication Disorders
Computer Engineering
Computer Science
Criminal Justice
Cybersecurity
Education
Electrical Engineering
English
Exercise Science
Fashion Marketing & Merchandising
Finance
Game Design & Development
Global Studies
Health Science
History
Immersive Media & Mixed Reality
Information Technology
Management
Marketing
Mathematics

Media Arts
Molecular & Cellular Biology
Music
Neuroscience
Nursing
Philosophy
Political Science
Psychology
Social Work
Sociology
Spanish
Sport Management
Sports Communication & Media
Strategic Communication, Public Relations & Advertising
Theatre Arts
Theology & Religious Studies

PRE-PROFESSIONAL PROGRAMS

- Pre-Dental
- Pre-Law
- Pre-Medical
- Pre-Optometry
- Pre-Osteopathy
- Pre-Pharmacy
- Pre-Physician Assistant
- Pre-Podiatry
- Pre-Veterinary

ENGLISH LANGUAGE INSTITUTE

- CEA accredited
- Academic-focused classes
- On campus

- For students 17 years and older
- Eight-week sessions offered year-round
- Homestay solutions provided

OUTCOMES

SHU is located in Fairfield County, one of the wealthiest regions in the U.S.A. Internships are convenient in the nearby New York City, Boston and Connecticut's "creative corridor."

Approximately 99% of graduates are successfully employed or enrolled in a graduate program one year after graduation.

Sacred Heart's Center for Career & Professional Development offers:

- Access to 400,000+ employers in Handshake, SHU's career management platform
- Proximity to Fortune 500 companies
- One-to-one career coaching and interview preparation
- Pre-professional advising

Visit www.sacredheart.edu/career

Your Career Development Is Important at SHU

Dress for success and meet future employers at career fairs on campus. You may attend resume-building workshops, practice interviewing skills and get individualized attention throughout your time at Sacred Heart University.



MICHAEL KORS



J.P.Morgan

Deloitte.



Bank of America.



Building a better working world

STUDENT SUCCESS STORY: MANSI PATEL

CLASS YEAR: 2020

JOB: Healthcare Business Analyst at P3 Health Partners, Oregon

STUDENT ADVICE: "Have patience. Also, understand the fact that getting hired is a two-way process. Applicants should know that it's important for the employer to know if the candidate is a good fit, the same way it is important for an applicant to understand if the job is one they can see themselves doing with satisfaction."



GRADUATE PROGRAMS *(Available to students with an F-1 visa)*

MS Athletic Training	MS Healthcare Informatics
MBA Business Administration	MS Industrial/Organizational Psychology
MS Business Analytics	MA Journalism & Media Production
MS Chemistry	MS Occupational Therapy
MS Computer Science/Information Technology	DPT Physical Therapy
MS Cybersecurity	MPH Public Health
MS Digital Marketing	MSW Social Work
MS Education Literacy	MA Sports Communication & Media
MS Exercise and Sport Science	MA Strategic Communication & Public Relations
MA/MFA Film & Television Production	MS Strategic Human Resource Management
MS Finance & Investment Management	

ACCELERATED PROGRAMS

Students who enroll in certain undergraduate programs at Sacred Heart are given the opportunity to complete a graduate degree within an accelerated program. Based on the student's academic performance, graduate classes can be taken beginning in the final year of undergraduate study.

Examples of available accelerated programs:

- 4+1 MS Strategic HR Management
- 3+3 Doctor of Physical Therapy
- 4+1 MS Chemistry
- 3+2 MS Public Health, MS Athletic Training, MS Exercise and Sport Science, MS Occupational Therapy

SHU STUDENT TESTIMONIALS



Tommaso from Italy
Class of 2024
Business Economics

"I am part of the basketball team here at SHU and I am majoring in business economics. What I really appreciate about SHU is the campus and its people: there is a lot of nature in the campus and the buildings are really nice. As an Italian international student, SHU was able to make me part of the community and I feel like I am home. GO PIOS!"



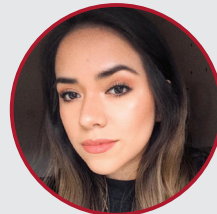
Fuiona from Japan
Class of 2023
Global Studies

"I attended the community service pre-fall program when I was a freshman and realized that there are very nice people here and this University has a great community. I am a member of the dance ensemble within the performing arts. It is fun, and the people are nice as well! I really like how caring people are here and support for international students is great. It's good for me as an international student to have people who always try to help me and make me comfortable in a place that is so different from my hometown."



Ishpal from Kenya
Class of 2024
Business Management

"SHU is a hidden gem in the heart of CT, a small university but not one to disregard – rapidly growing and with modern campus buildings. The University is focusing on investing in innovation and technology to help students adapt to the 21st century. Some of the nicest people you will ever meet."



Marlis from Peru
Class of 2020, Media Studies
MS Digital Marketing

"As an international student, it can be challenging to move to another country and start over. However, SHU not only has a beautiful campus with high-quality amenities that keep you comfortable, but it is also a place to meet your lifelong friends. Since day one, I've always had support from the SHU faculty and staff, and that is what makes SHU special—they make you feel like home. Coming to SHU has been one of the best decisions I've made in my life, and I wouldn't trade this amazing experience for the world."