

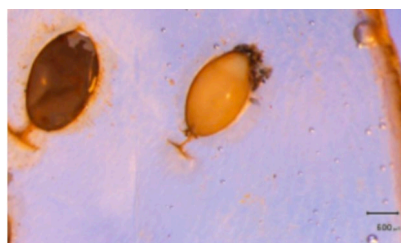
Project Limulus Parasite condition collection guide.

Observe horseshoe crabs for any adult flatworms. Gently flip through the gills to look for egg casings or adult flat worms. Use the below table to assign a number for the parasite condition of the horseshoe crab.

Parasite Condition Key:

Condition	0	1	2	3	4
Description:	No flatworm adults/egg cocoons present	<100 flatworm adults and/or up to 2 egg cocoon coverage of gill leaflets	Roughly 100 adult flatworms and/or 25-50% egg cocoon coverage of gill leaflets.	Little more than 100 adult flatworms and/or 50-70% cocoon coverage of gill leaflets	Many 100's of adult flatworms and/or >70% coverage of gill leaflets.

Example pictures of horseshoe crabs with parasites: eggs in gills and adult flatworms.



Eggs in the gills