



# SACRED HEART UNIVERSITY

5151 Park Avenue  
Fairfield, CT 06825-1000  
[www.sacredheart.edu](http://www.sacredheart.edu)

OPEN A HEART. OPEN A MIND. TRANSFORM A LIFE.



# Student Commons

*Connecting Our Campus and Our Community*



SACRED HEART UNIVERSITY



## Enriching a Whole Education

At Sacred Heart University, we are preparing men and women for professional excellence, but even more, we are preparing them for life. As the second-largest Catholic university in New England, we are committed to challenging, nurturing and developing the whole individual, the whole student.

The new Student Commons is a testament to our University's broad, student-centered education. This dramatic new building is a key part of an exciting, forward-looking vision for our University—one that began with our new Chapel, and is now continuing with our impressive new Student Commons.

Linking our University's academic, spiritual and extracurricular cores, as well as our upper and lower campuses, the distinctive V-shaped Student Commons will serve as a physical and social crossroads for our campus, while providing a variety of services to meet the evolving needs of our students.

This prominent addition will not only be transformative for our campus, but more importantly, it will enrich the quality and breadth of our University's education. We invite you to learn more about the new Student Commons, and we ask for your support, as we grow together toward a "whole" new future at Sacred Heart University.

### Creating Connections

- \* The Student Commons will be an active crossroads and a popular destination, providing many opportunities for connections among our students and among our entire Sacred Heart community.

### Student Services

- \* With a focus on student support, the Student Commons will offer a variety of services, including dining facilities for 250, and a modern, new University bookstore.

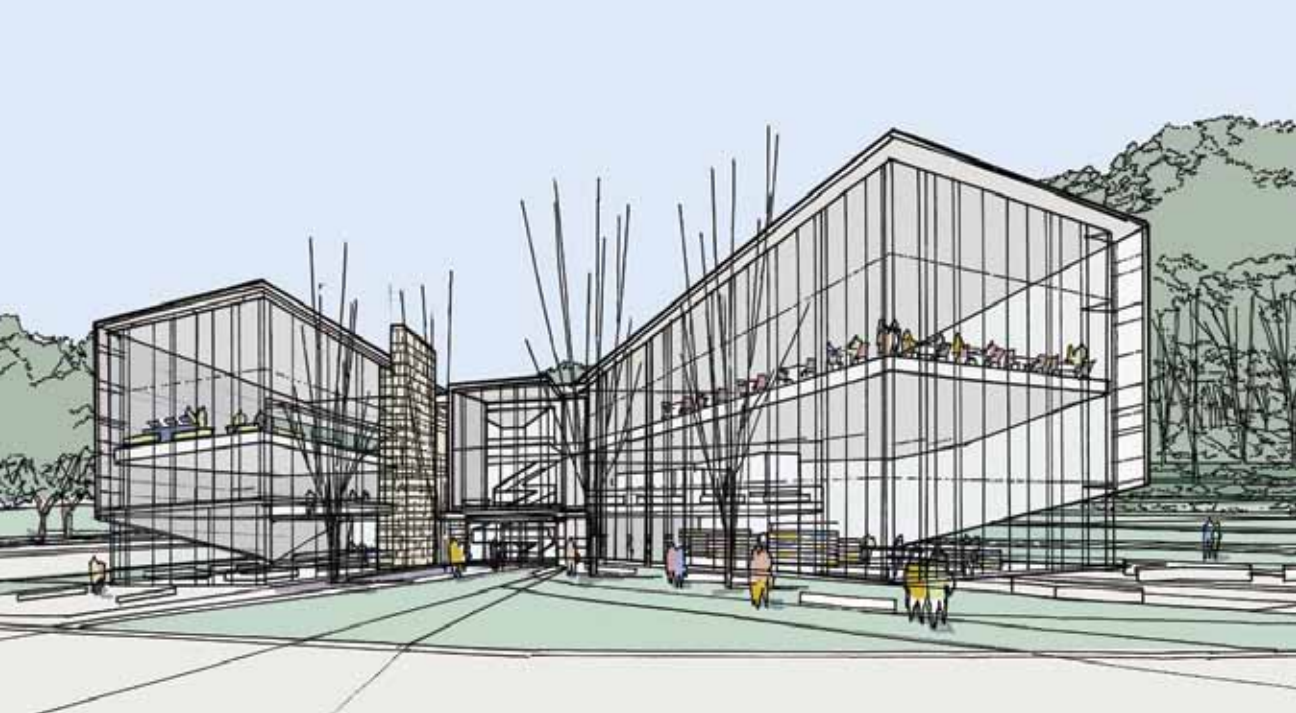


\* on the cover: rendering of the front exterior of the new Student Commons



Ours is an education of the whole person. Integral to that are the interactions that take place among our students, and among our students and faculty. The new Student Commons will be a place where those important connections can be made.

\* below: rendering of the main entrance to the Student Commons.



When approaching the main entrance of the Student Commons, students are embraced by the two wings of the building, as if being welcomed by open, outstretched arms.



## Creating a Hub for Student Engagement

On Thursday, May 6, 2010, Sacred Heart University broke ground for its new Student Commons. It was yet another step in an inspired master plan to make a strong, thriving University even stronger.

The campus plan began with a new Chapel at the heart of what is known today as our University Quad. The distinctive design of the Chapel of the Holy Spirit set a new standard for our campus, and the new Student Commons continues that level of elegance and refinement in a building entirely dedicated to student support.

The Student Commons will immediately become a focal point on campus, serving as a popular gathering space for students to meet and study. They will come to Student Commons for a variety of reasons—to join a friend for lunch, attend a function, meet with a career counselor, sit in on a presentation, buy textbooks, and more.

The Student Commons will serve as a hub: a “go-to” building on campus, offering a meeting place for students, as well as providing important resources to help them succeed and make the most of their Sacred Heart experience.

### About the Student Commons

- \* The Student Commons will serve as a crossroads, connecting our campus, as well as our students to one another.
- \* Students will gather with friends to study, eat and socialize in a relaxed, comfortable atmosphere.
- \* These peer-to-peer interactions are essential in the learning process and in creating a high-quality student experience.
- \* Building connections and increasing engagement enhances the likelihood of success for students.





## An Uncommon Student Commons

Spanning four levels and 46,000 square feet, the distinctive and dramatic Student Commons is located at the junction of the Humanities Center Academic Wing and Merton Hall, leading to the William H. Pitt Health and Recreation Center.

Set seamlessly into the hillside, the building will beautifully weave architecture and landscape. A sophisticated exterior of glass and stone will create an important visual tie to surrounding buildings, enhancing the overall effect with a similar but distinctive coloration. Walls of glass will create a transparent, open sensation throughout the building, bringing in abundant natural light and opening up dramatic vistas to other areas and buildings across the campus.

As impressive as the building's form will be its wide-ranging function. The lower level will feature a well-equipped pub for various student and campus activities; the first floor, an impressive presentation room along with the University's bookstore; the second floor, student services such as Career Services, and the top floor, two separate dining areas plus a state-of-the-art kitchen.

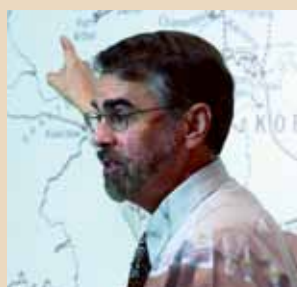
From a meeting of a few friends to an official University gathering, from a quick lunch to a formal patio dinner, from a solo study session to a full-house presentation, the new Student Commons will meet a variety of needs, providing valuable space, resources and support for our students, our faculty and our entire Sacred Heart community.

### Exterior of Student Commons

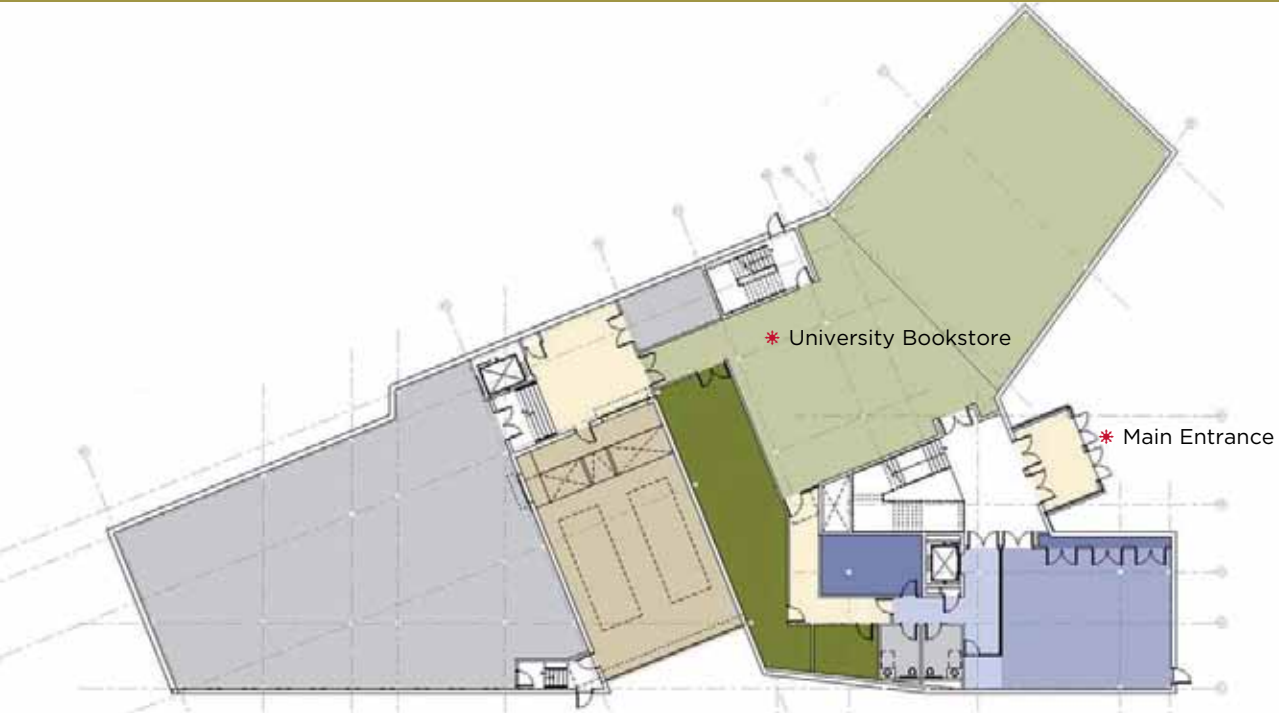
- \* Sophistication and elegance, without extravagance
- \* Open, transparent building with lots of glass
- \* Italian natural stone
- \* Working toward LEED Silver certification

### Interior of Student Commons

- \* Beautiful interior finishes
- \* Terrazzo floors
- \* Monumental staircase at core of building
- \* Expansive, comfortable lounge area
- \* Large dining area seating 250 people
- \* Smaller Hearth Room, opening to exterior patio



\* below: The University bookstore will be relocated to the Student Commons to provide a more convenient and accommodating location.



The new Student Commons was designed by internationally renowned **Sasaki Architects**, who designed our award-winning Chapel, and other major projects at such schools as Harvard, Boston College, and Trinity College in Hartford.

\* *The Student Commons building will cost \$17 million and is planned for completion in 2012.*



As a leading Catholic university, we are **constantly seeking ways to make a Sacred Heart education an even more powerful experience for our students.** The new Student Commons is one of those ways.



## Commemorative and Memorial Opportunities

This is an important time in the life of our campus. The new Student Commons is yet another step forward in implementing our University’s future vision, which over the coming years will have an enormous, positive impact on our physical presence—and on the students we serve.

The outpouring of support shown to the University at this important time continues to be a blessing. From the greater Fairfield community to our generous alumni, parents and other friends, we are fortunate to be in a position to plan for the future confident in our ability to raise the funds necessary to meet the financial obligations of this project.

As we embark on this next chapter of Sacred Heart’s story, it is equally critical that all of the varied members of our extended community continue to support our efforts. To that end, we are pleased to present a number of commemorative and memorial opportunities to help support construction of the Student Commons.

These giving opportunities include not only the naming of the Student Commons itself, but also dedicating key elements and spaces within the new structure. In addition to the major commemorative and memorial dedications, there are numerous other giving opportunities at a variety of levels.

### Student Commons Building Naming Opportunities

Student Commons Naming.....	\$5,000,000
Main Dining Hall.....	\$1,000,000
Rathskeller .....	\$500,000
Private Dining Room .....	\$500,000
Café .....	\$250,000
Bookstore.....	\$250,000
Presentation Room .....	\$250,000
Exterior Patio.....	\$100,000
Exterior Stairway .....	\$100,000
Mezzanine Lounge.....	\$50,000
Electronic Kiosk.....	\$50,000
Mezzanine Offices.....	each \$25,000
Exterior Benches.....	each \$10,000

Additional opportunities available. Please call 203.371.7860 for additional information.





## SHU at a Glance

- \* *U.S. News & World Report's* "America's Best Colleges" ranks SHU in the top tier of Master's Universities in the North, while the *Princeton Review* recognizes SHU as among the "Best in the Northeast" in its annual college rankings.
- \* More than 6,000 students are enrolled in its four colleges: Arts & Sciences; Education & Health Professions; University College; and the AACSB-accredited John F. Welch College of Business, committed to educating students in the leadership tradition and legacy of Jack Welch.
- \* The top four states students come from are New York, Connecticut, New Jersey and Massachusetts.
- \* The University offers more than 40 degree programs on the associate's, bachelor's, master's and doctoral levels.
- \* For the second consecutive year, Sacred Heart University was named to the President's Higher Education Community Service Honor Roll by the Corporation for National and Community Service. And, SHU's Habitat for Humanity campus chapter has earned a place in the top five collegiate chapters among more than 500 in the nation.
- \* 90% of all full-time undergraduates receive financial aid, representing a University commitment of more than \$34 million annually.
- \* The student-to-faculty ratio at Sacred Heart University is an impressively low 13-to-1.

### For More Information

The staff at Sacred Heart University will be happy to answer your questions and send you additional information about projects of interest or ways of making a gift. Please call or write:

Office of Institutional Advancement  
5151 Park Avenue  
Fairfield, CT 06825-1000  
t: 203.371.7860  
f: 203.365.7512  
e: [advancement@sacredheart.edu](mailto:advancement@sacredheart.edu)





The University was founded in 1963 by the Most Reverend Walter W. Curtis, is **the second-largest Catholic university in New England**—and the first in America founded to be led and staffed by lay people.